



COMMERCIAL
Smart Solutions for Play and Beyond

PICO PlayCASTLE

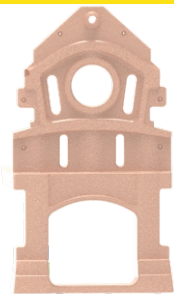
Tips for Safe & Joyful Play

Welcome to a world of adventures. You child's safety always comes first and by following these simple guidelines, you can create a joyful, safe play space that lasts for years to come.

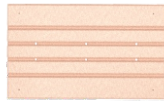
- Before starting, refer to the "Location Selection Guide" to choose the perfect spot to install your Pico PlayCASTLE. Make sure product is placed on a level, stable surface to guarantee safety, proper function and durability.
- Pico PlayCASTLE is designed for an adult-only assembly to ensure every piece is fitted with precision. Keep all the parts out of the reach of children until the product is fully assembled.
- To protect the parts from scratches, assemble the product on a soft, non-abrasive surface.
- Packaging materials are not safe to play with and should be kept away from children.
- Before each play session, take a few minutes to confirm that all the fasteners are firmly tightened and all the parts are securely fastened. Also, make sure the play area is free of sharp objects, debris or other potential hazards that may cause injuries.
- Teach your child to sit upright and go down feet-first on the slide. Climbing up the side, sliding down headfirst or in the standing position can be fatal and should be avoided at all costs. Additionally, parents should discourage their children from jumping off the slide seat.
- Do not attach any external ropes, chains, or accessories not supplied with the Pico PlayCASTLE, as these may interfere with the normal functioning of the product.
- Only one child on the slide is recommended at a time. Children should wait until the landing area is completely clear before going down the slide.
- The product is intended for use by kids over 2 years of age and has a play capacity of up to 3 children at a time. Never exceed the user limit.
- While assembling the Pico PlayCASTLE, do not overtighten the bolts as this may cause damage to the parts.
- Adult supervision is recommended at all times to promote safe play and provide immediate assistance (when required).
- Regularly wipe the product with a plane, dry cloth regularly and avoid using harsh chemicals. For detailed care instructions, refer to the "Operation and Maintenance Guide" provided with the product.



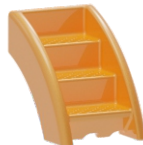
Part Details



Small Castle Side Panel x 2



Small Platform x 1



Stair x 1



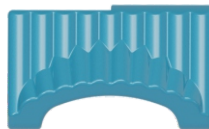
Slide x 1



Anchor Fastener x 4



T-Handle x 1



Small Castle Roof x 2



Allen Key x 1



Allen Bolt (40mm) x 4



Allen Bolt (60mm) x 4



Allen Bolt (50mm) x 2



Allen Bolt (70mm) x 4



Washer x 18



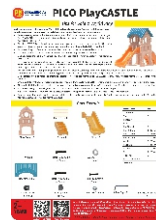
Nut Cap Base x 19 (5 Spare)



Nut Cap x 19 (5 Spare)



Nut x 4



Instruction Manual x 1

List of Parts	No.
Small Castle Side Panel	2
Stair	1
Small Platform	1
Slide	1
Small Castle Roof	2
Allen Bolt (40mm)	4
Allen Bolt (50mm)	2
Allen Bolt (60mm)	4
Allen Bolt (70mm)	4
Washer	18
Nut Cap Base	19 (5 Spare)
Nut Cap	19 (5 Spare)
Nut	4
Allen Key	1
Instruction Manual	1
T-Handle	1
Anchor Fastener	4

Assembly requires a minimum of 2 people. Have a third person assist when necessary.

Model No: PIPC

2+ YEARS



Customer Support



Assembly Video

Before starting the assembly, please ensure that the part quantity matches the numbers listed in the manual. If you find any discrepancies in the part count or encounter any product-related issues, feel free to reach out to us at +918221001033 or connect with us via WhatsApp in between 9:30-6PM, Monday to Saturday. We're here to assist you!

DISCLAIMER: Actual product color may vary slightly from what is shown in the image.



WARNING



Anchoring the PlayCASTLE (Mandatory)

For enhanced stability and safety, OK Play recommends anchoring the Play Castle to the floor. Pico PlayCASTLE may also be used without anchoring but securing it to the floor will minimize movement during play.

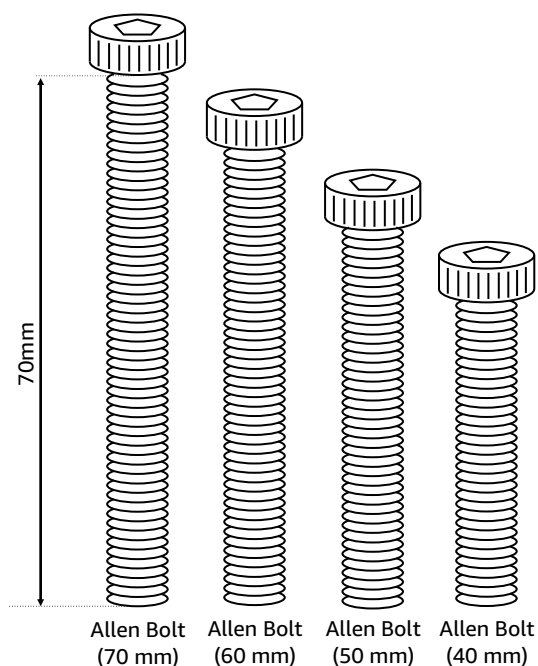
To secure the Pico PlayCASTLE to the floor:

1. Drill holes in the floor at the positions where the play castle is to be anchored.
2. Position the play set at the desired location, aligning pre-drilled holes on the base of both side panels with the drilled holes.
3. Insert an anchor fastener (provided in the packaging) through each of the two holes on both small castle side panels, making sure each anchor fastener passes directly into the corresponding drilled hole on the floor.
4. Tighten the anchor fasteners firmly to secure the side panels to the floor.

Once completed, the play set will be anchored securely, minimizing movement during use.

Bolt Size Identification

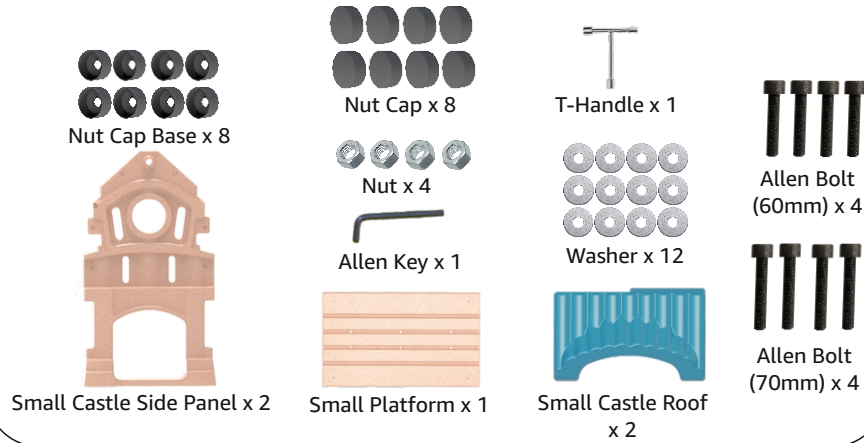
To identify the bolt size, place it on the printed image and match the length of the bolt threaded shaft with the illustration.



1 STEP

Assembly Instructions

Required Assembly Parts

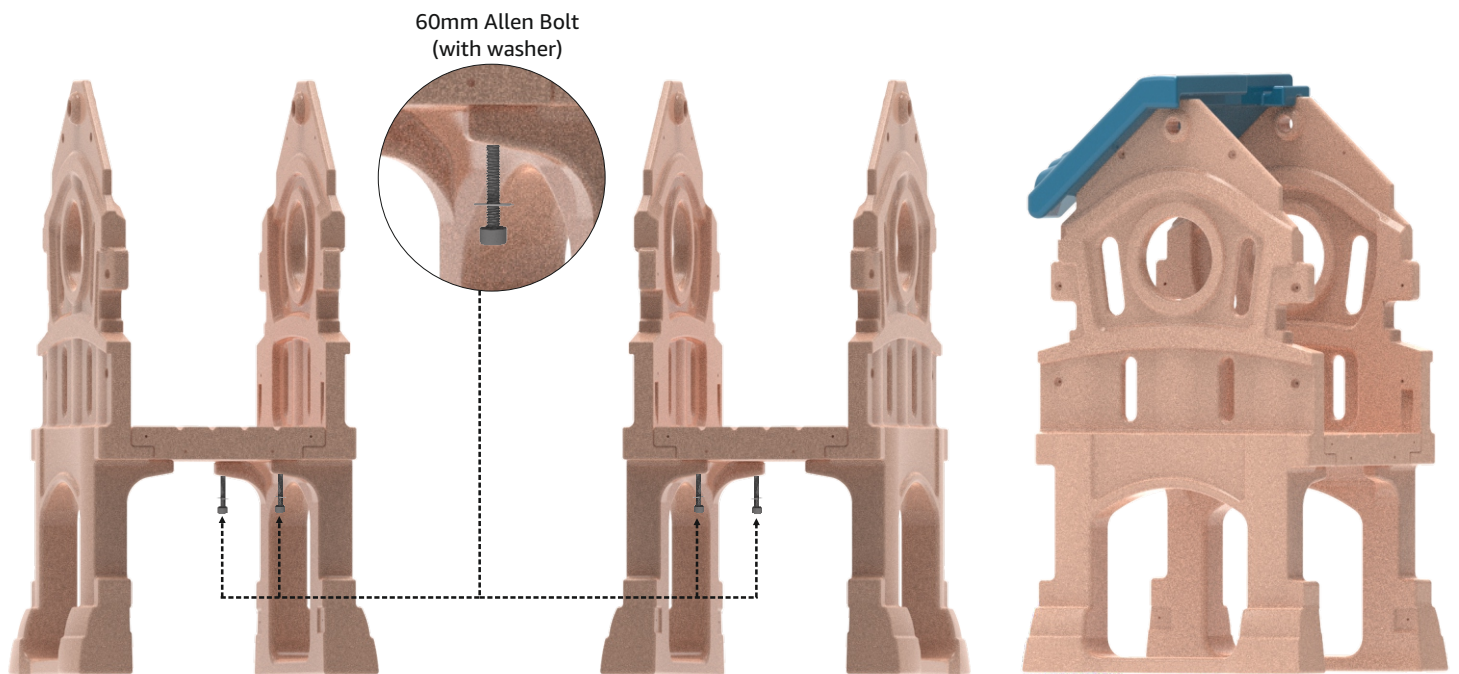


Assemble the PlayCASTLE on a soft, non-abrasive surface to protect it from scratches.



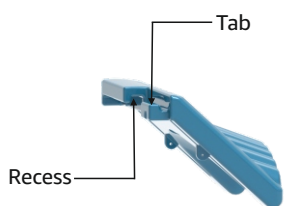
Place the two small castle side panels upright on a flat, stable surface, making sure they are parallel to each other and at an appropriate distance apart.

Position the small platform between the side panels making sure the grooves on the underside of the small platform align with the tabs on the inner side of the side panels. Carefully move the platform downward so it fits securely between the small castle side panels.



- Take four 60 mm allen bolts and put a washer onto each.
 - From underneath the subassembly, insert one 60mm allen bolt (with washer in place) into each of the four aligned hole pairs of the small castle side panels and the small platform.
- Tighten all the allen bolts one by one with the allen key.**

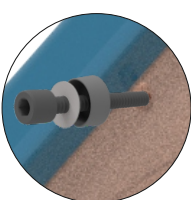
Place one small roof on top of the assembled small panels as shown in the image above.



Take the other small roof and place it on top of the side panels, making sure the top edges of both small roofs are aligned.

Interlock the two small roofs together by inserting the tab of one small roof into the corresponding recess of the other. Adjust the roofs, if needed, so they fit properly.

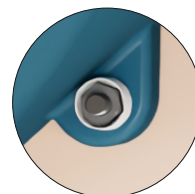
Note: Make sure the top edges of the small castle side panels fit into the grooves on the underside of the assembled roof panel.



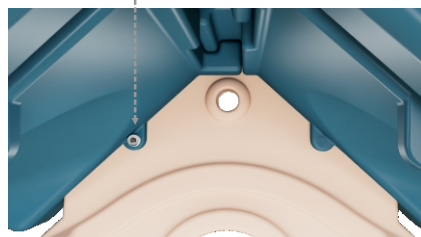
Allen bolt (70mm) with a washer and a nut cap



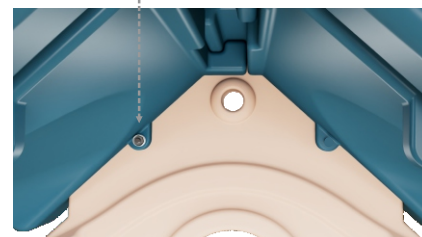
Nut Cap Base and Washer



Nut

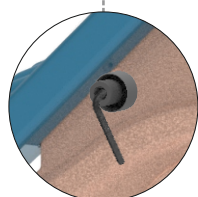


From inside the subassembly, place a nut cap base and a washer onto the allen bolt (inserted in the previous step) from the bolt end.

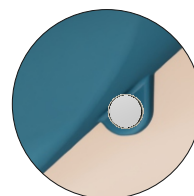


Take a nut and put it onto the allen bolt from the bolt end.

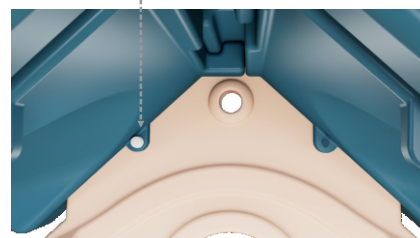
Put a washer first and then a nut cap base onto a 70mm allen bolt and insert the bolt (with the washer and the nut cap base in place) through the aligned holes of the roof panel and the side panel. The threaded end of the allen bolt protrudes from the other side



Tighten the bolt with allen key



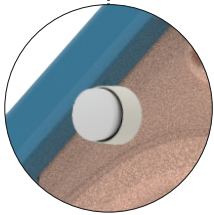
Nut Cap



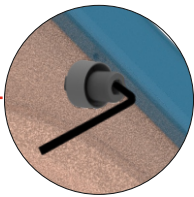
Place the nut cap onto the bolt end and press it firmly until it fits securely in place.

From outside the subassembly, tighten the allen bolt with the allen key provided in the packaging. Use the T-handle to hold the nut stationary while tightening the allen bolt.

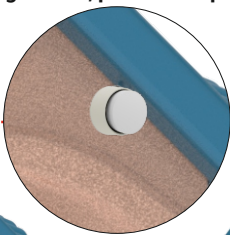
From outside the subassembly, fit a nut cap onto the bolt head.



Nut Cap



Repeat the above steps to insert one 70 mm allen bolts, fitted with a washer, through each of the remaining three aligned holes of the small castle side panel and the roof. For each allen bolt, use two nut cap bases, two washers, a nut and then tighten the bolt with the allen key as mentioned in the sequence of actions in this step. **Once tightened, put a nut cap onto the head and the end of each bolt.**



2 STEP

Required Assembly Parts



Subassembly (Step 7)



Slide x 1



Washer x 4



Allen Bolt (40mm) x 4



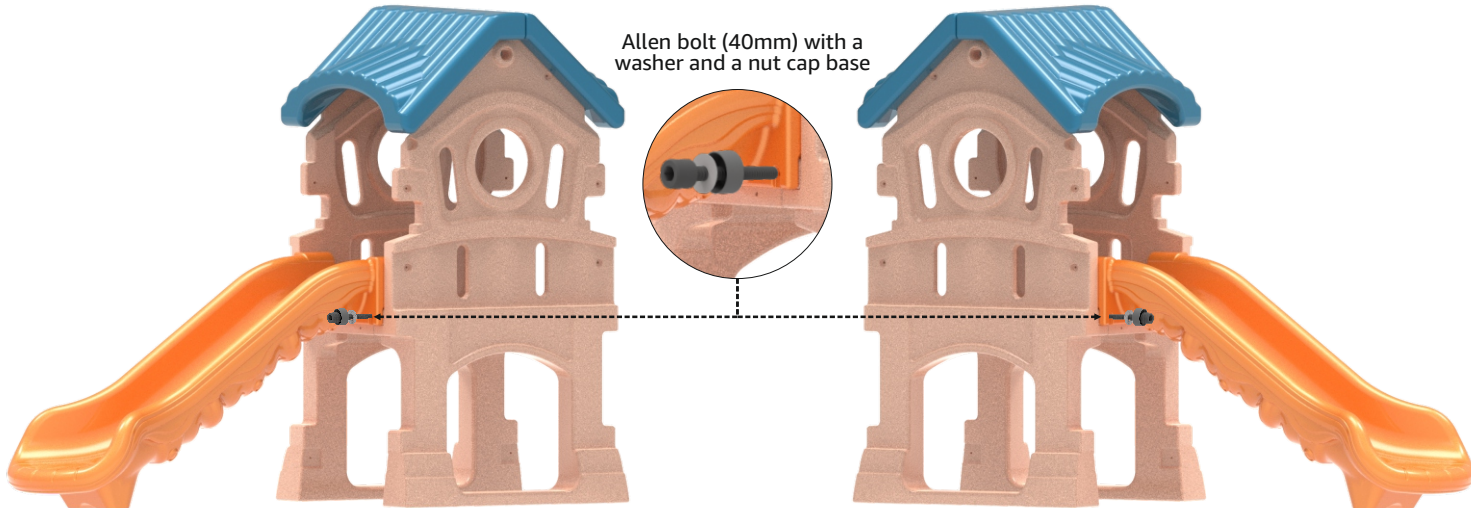
Allen Key x 1



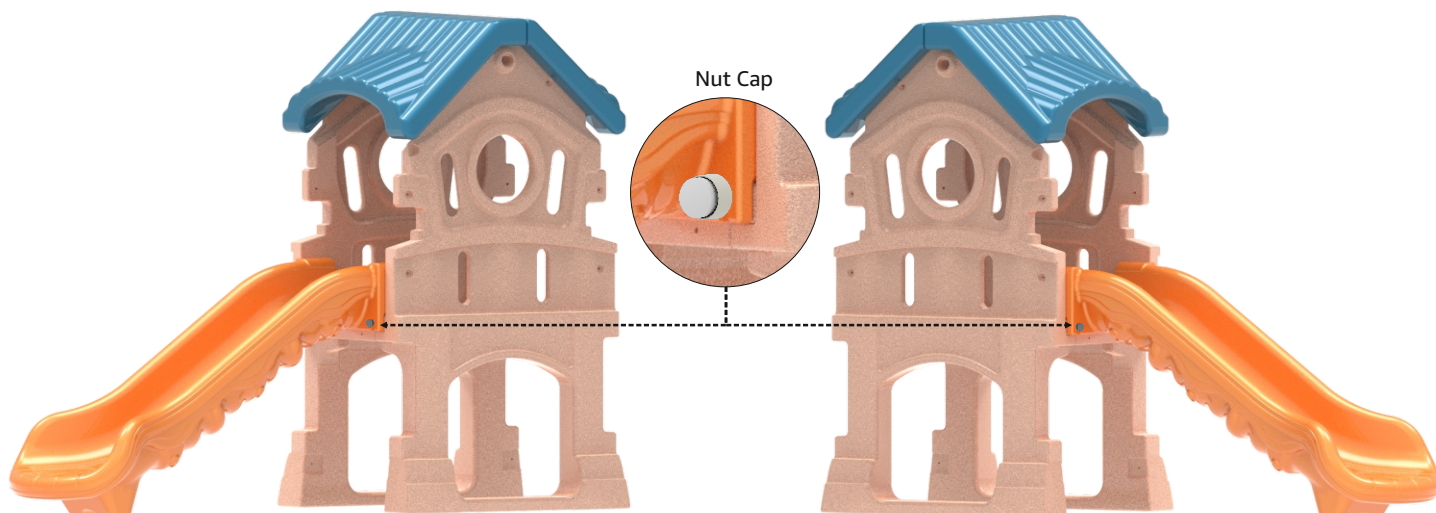
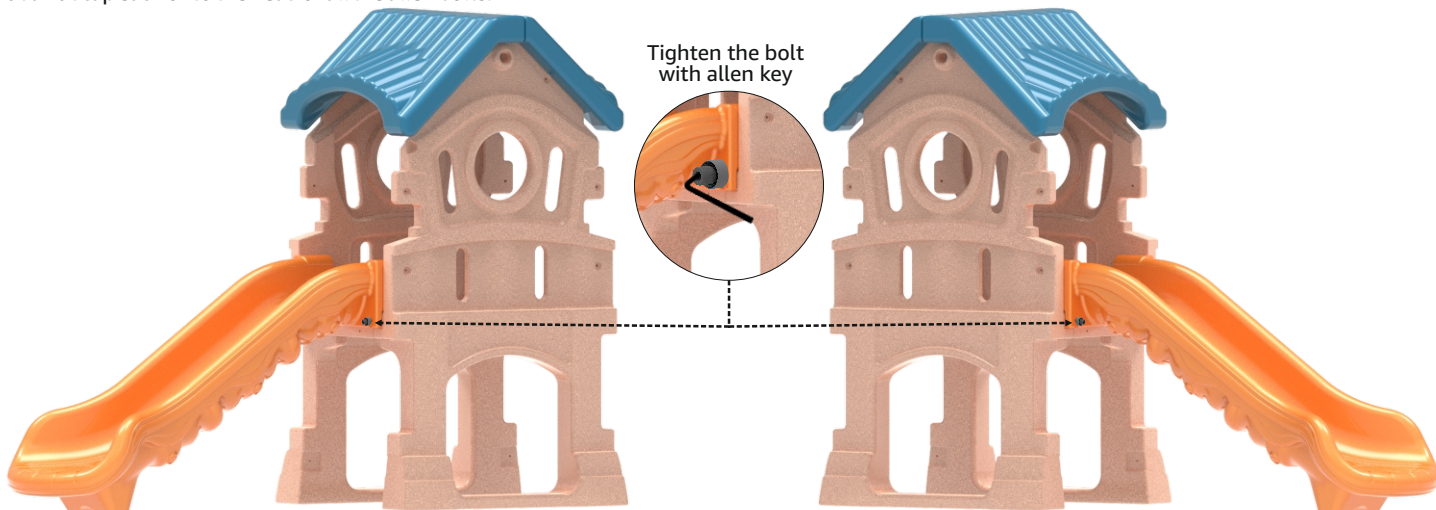
Nut Cap Base x 4

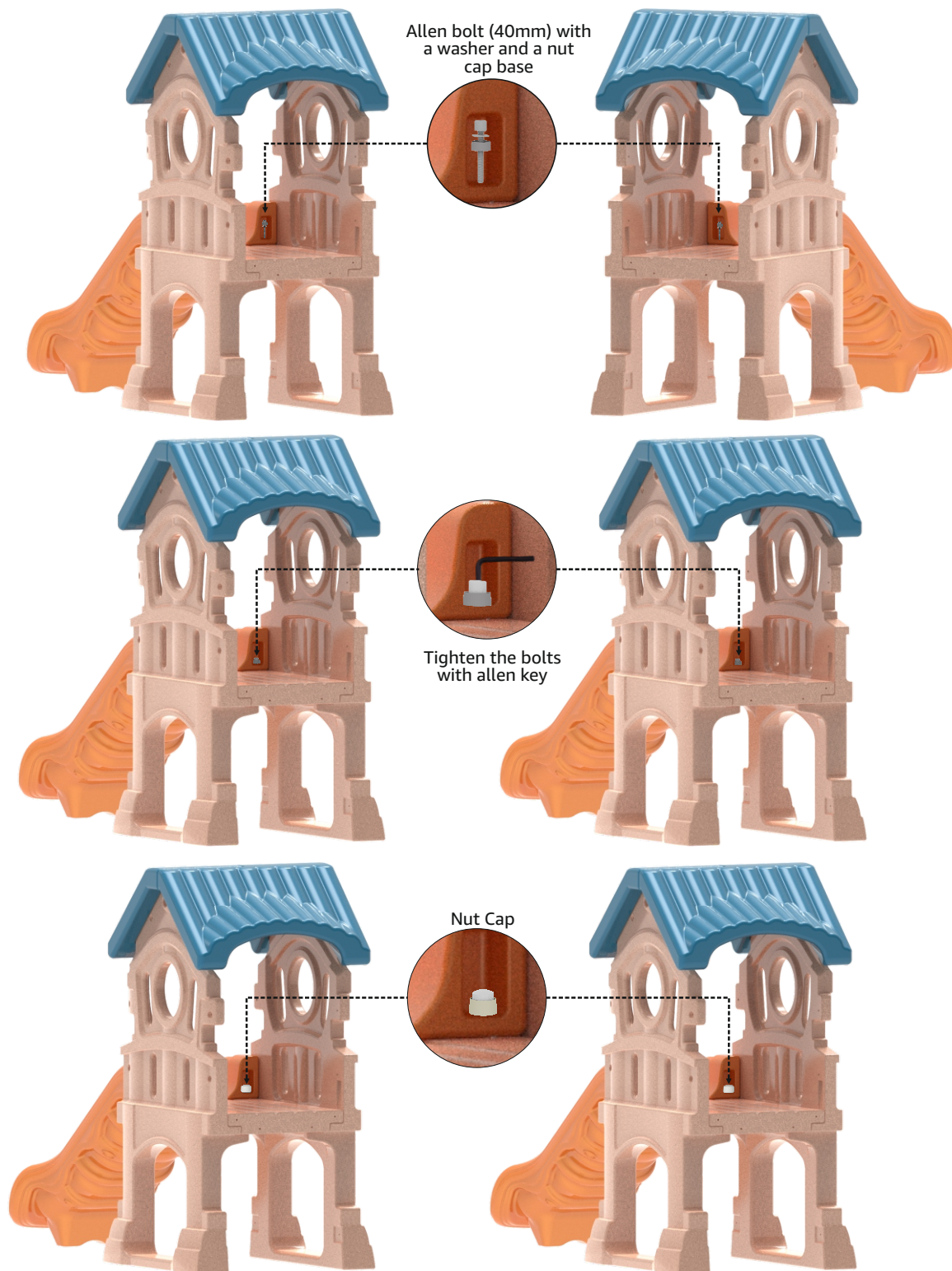


Nut Cap x 4



Take the slide and fasten it to the subassembly (step 7) by tightening the four allen bolts (40mm), each with a washer and a nut cap base, with the allen key. Put a nut cap each onto the head of all the allen bolts.





3
STEP

Required Assembly Parts



Subassembly (Step 2)



Stair x 1



Washer x 2



Allen Key x 1



Allen Bolt (50mm) x 2



Nut Cap x 2



Nut Cap Base x 2

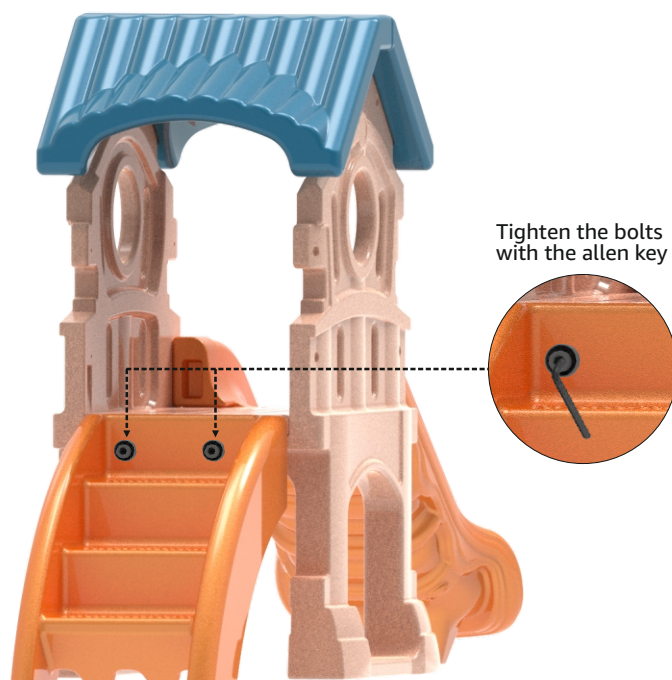


Take the stair panel and place it at the position as shown in the image above. Make sure the holes at the top of the stair are aligned with the corresponding holes on the platform.

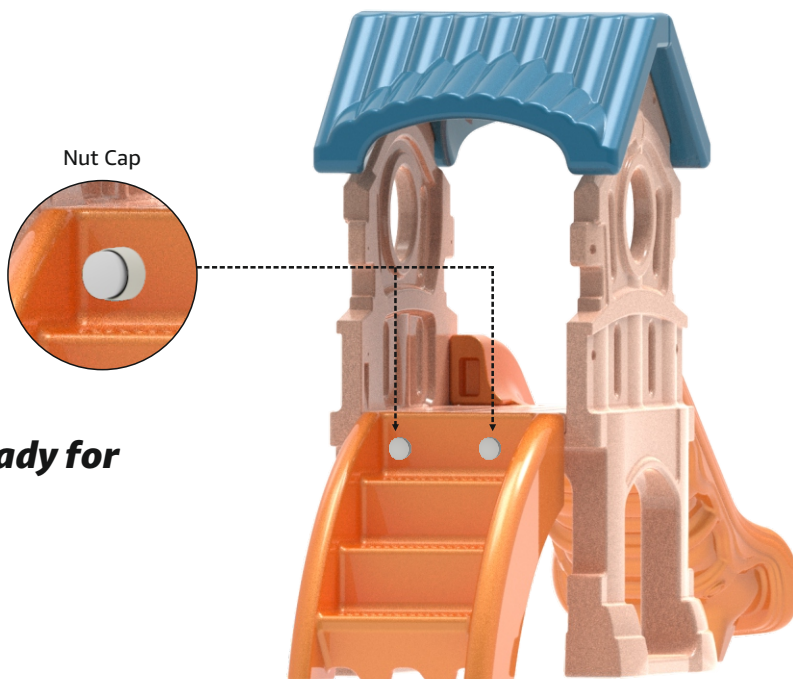


Put a washer and a nut cap base each onto the two allen bolts (50mm). Insert one bolt (with a washer and a nut cap base) into each of the two pairs of the aligned holes.

Tighten both the allen bolts one by one with the allen key.



Put a nut cap each onto both the allen bolts.



Your PICO PlayCASTLE is now ready for use!